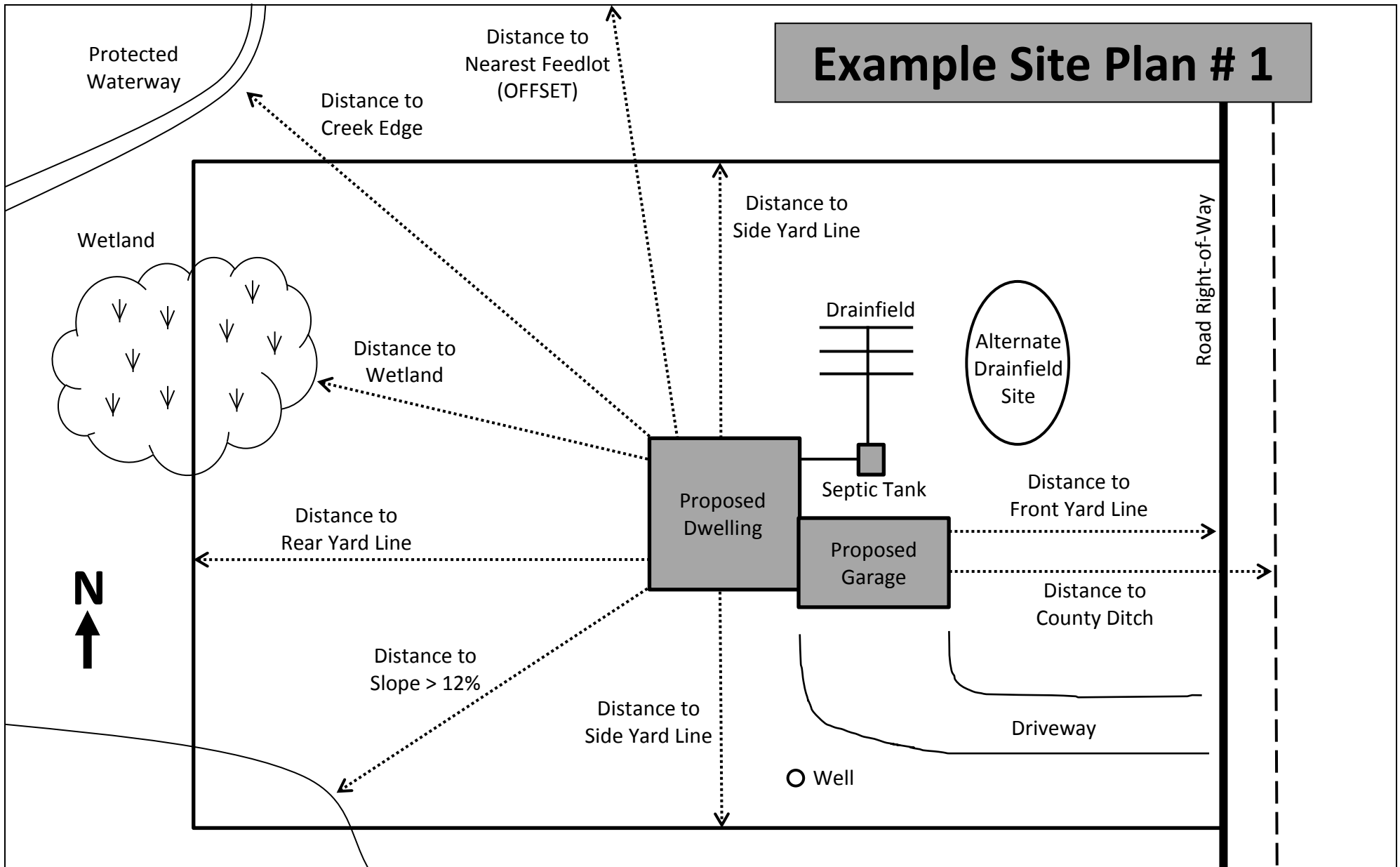


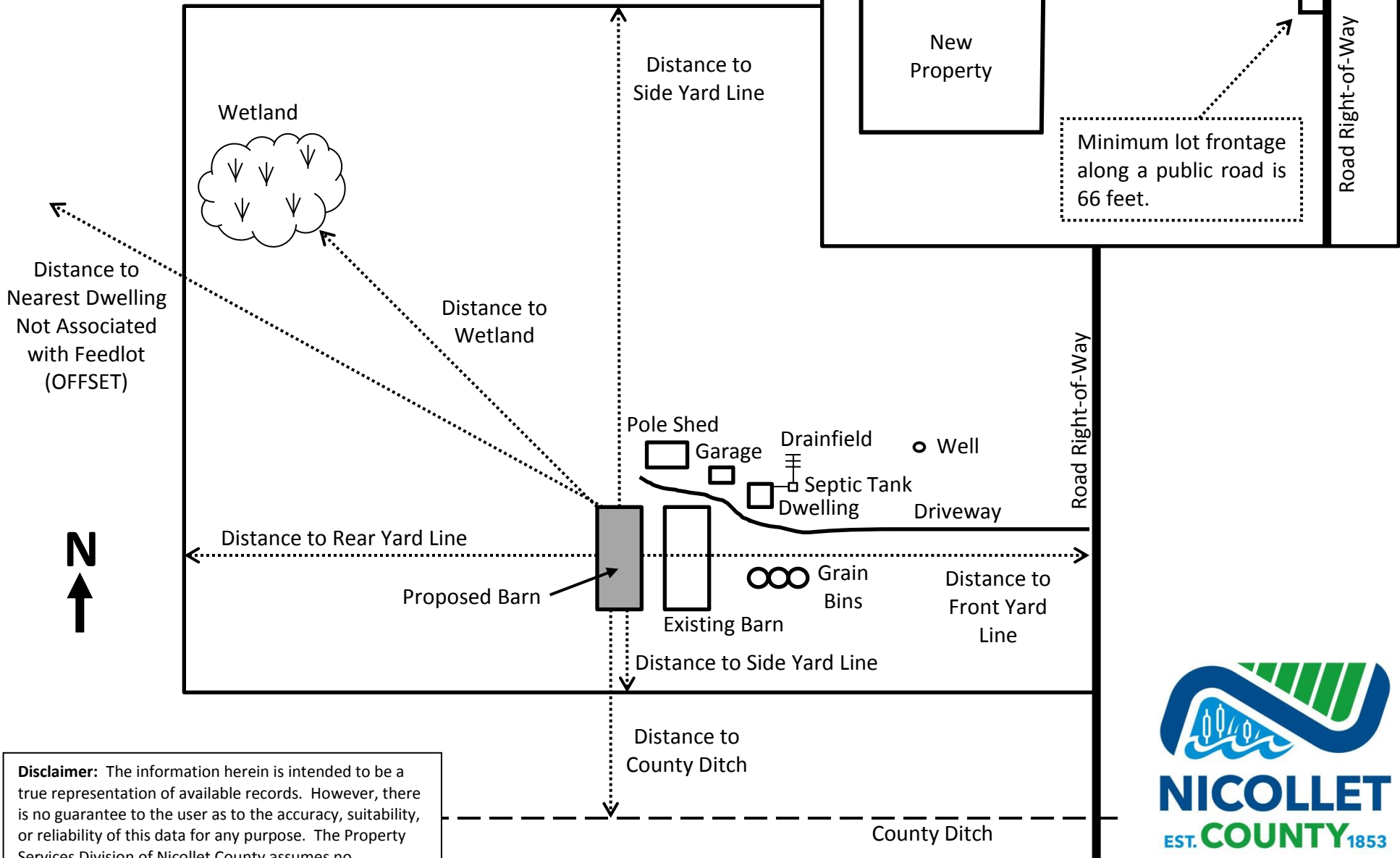
# Example Site Plan # 1



Bluff Breakline  
(Slope >12%)

**Disclaimer:** The information herein is intended to be a true representation of available records. However, there is no guarantee to the user as to the accuracy, suitability, or reliability of this data for any purpose. The Property Services Division of Nicollet County assumes no responsibility for actual or consequential damage incurred as a result of any user's reliance on this data.

# Example Site Plan # 2



**Disclaimer:** The information herein is intended to be a true representation of available records. However, there is no guarantee to the user as to the accuracy, suitability, or reliability of this data for any purpose. The Property Services Division of Nicollet County assumes no responsibility for actual or consequential damage incurred as a result of any user's reliance on this data.

